

IWW - JACKSONVILLE TO MIAMI CUTS F-1 THRU F-32 FLAGLER COUNTY, FL HYDROGRAPHIC EXAM SURVEY FY21 12-FOOT PROJECT

SURVEY NOTES

- REFER TO SURVEY NO. 21-206.
 - SOUNDINGS ARE IN FEET AND TENTHS AND REFER TO NOAA'S REPORTED MEAN LOWER LOW WATER (MLLW) OF THE 1983-2001 TIDAL EPOCH.
 - TIDAL REDUCTIONS WERE OBTAINED UTILIZING A REAL-TIME KINEMATIC (RTK) GPS AND REFERENCED TO MLLW UTILIZING A HYPACK KINEMATIC TIDE DATUM (KTD) MODEL. KTD FILE NAME IS: "CANDENGA-NASSAU-DUVAL-STJOHNS-FLAGLER_20191202.KTD".
 - ALL ELEVATIONS ARE BELOW THE CHART DATUM UNLESS PRECEDED BY A (+) SIGN.
 - PLANE COORDINATES ARE BASED ON THE TRANSVERSE MERCATOR PROJECTION FOR THE EAST ZONE OF FLORIDA AND REFERENCED TO NORTH AMERICAN DATUM OF 1983 (NAD83).
 - ALL STATIONING REFERS TO THE CENTERLINE OF THE CHANNEL.
 - THIS SURVEY WAS PERFORMED USING FLORIDA PERMANENT REFERENCE NETWORK (VRS) FOR REAL-TIME KINEMATIC (RTK) GPS POSITIONING.
 - DEPTHS DEPICTED BY THIS SURVEY ARE REFERENCED TO MLLW, TIDAL EPOCH 1983-2001 AS REPORTED BY THE NATIONAL OCEANIC AND ATMOSPHERIC ADMINISTRATION (NOAA). NOAA'S VDATUM MODEL WAS USED AND CALIBRATED TO THE PUBLISHED MLLW HEIGHTS OF THE BENCHMARK SITES SPECIFIED BELOW:
NOAA TIDAL STATION "0833 A 1978" FOR ALL CUTS (PID: AQ1748)
 - VERTICAL MEASUREMENTS WERE MADE USING AN EDGETECH 6205 MULTI-PHASE ECHOSOUNDER. ALL SOUNDINGS SHOWN ARE IN HIGH FREQUENCY.
- | VESSEL | DATE OF SURVEY | CUT |
|--------|----------------|---------------------|
| SB-44 | 25 JUN 2021 | CUTS F-1 THRU F-25 |
| SB-44 | 26 JUN 2021 | CUTS F-25 THRU F-32 |
| SB-48 | 08 JUL 2021 | CUT F-32 |
- AIDS TO NAVIGATION WERE LOCATED DURING THIS SURVEY.
 - THE INFORMATION DEPICTED ON THIS MAP REPRESENTS THE RESULTS OF SURVEYS MADE ON THE DATES INDICATED ABOVE AND CAN ONLY BE CONSIDERED AS INDICATING THE GENERAL CONDITIONS AT THAT TIME. THIS CHART IS SOLELY FOR THE DISTRIBUTION OF AVAILABLE DEPTHS AT THE TIME OF THE SURVEY.
 - SURVEY ACCURACY PERFORMANCE STANDARDS, QUALITY CONTROL, AND QUALITY ASSURANCE REQUIREMENTS WERE FOLLOWED DURING THIS SURVEY IN ACCORDANCE WITH USACE EM 1110-2-1003, HYDROGRAPHIC SURVEYING, 30 NOV 2013.

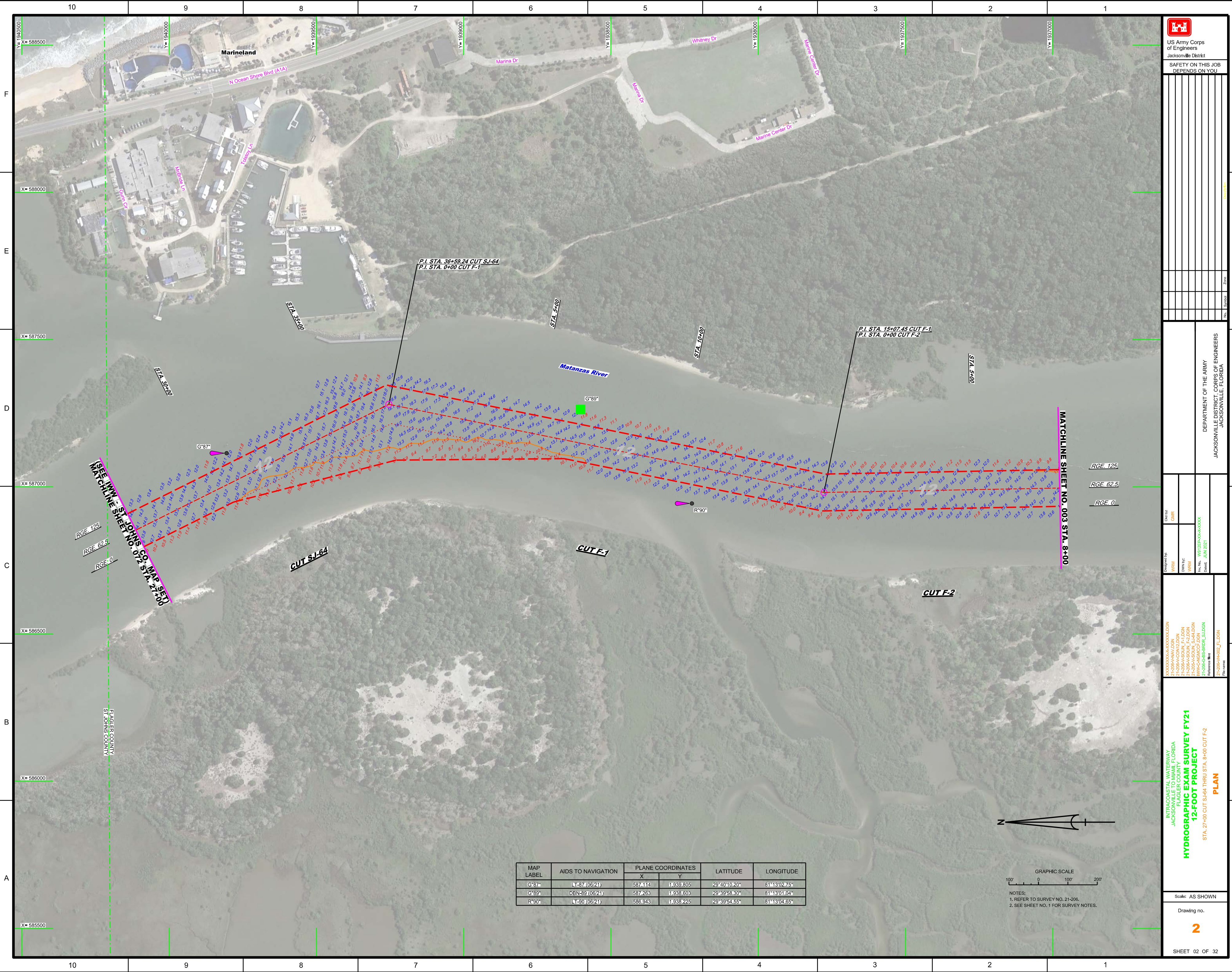
LEGEND	
	MONUMENT
	LIGHTED BEACON
	GREEN DAYBEACON
	RED DAYBEACON
	RED LIGHTED BUOY
	GREEN LIGHTED BUOY
	CAN BUOY
	NUN BUOY
	TIDE STAFF
	PROJECT DEPTH

US Army Corps of Engineers
Jacksonville District
SAFETY ON THIS JOB DEPENDS ON YOU

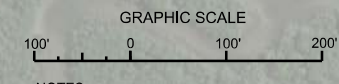
DEPARTMENT OF THE ARMY
JACKSONVILLE DISTRICT, CORPS OF ENGINEERS
JACKSONVILLE, FLORIDA

INTRACOASTAL WATERWAY
JACKSONVILLE TO MIAMI, FLORIDA
FLAGLER COUNTY
**HYDROGRAPHIC EXAM SURVEY FY21
12-FOOT PROJECT**
INDEX, LOCATION AND VICINITY
MAP


Scale: AS SHOWN
Drawing no. **1**
SHEET 01 OF 32



MAP LABEL	AIDS TO NAVIGATION	PLANE COORDINATES		LATITUDE	LONGITUDE
		X	Y		
G*87*	LT-87 (06/21)	587,114	1,939,805	29°40'10.20"	81°13'02.75"
G*89*	DBN-89 (06/21)	587,263	1,938,603	29°39'58.30"	81°13'01.04"
R*90*	LT-90 (06/21)	586,943	1,938,225	29°39'54.55"	81°13'04.65"



NOTES:
 1. REFER TO SURVEY NO. 21-206.
 2. SEE SHEET NO. 1 FOR SURVEY NOTES.



US Army Corps of Engineers
 Jacksonville District
**SAFETY ON THIS JOB
 DEPENDS ON YOU**

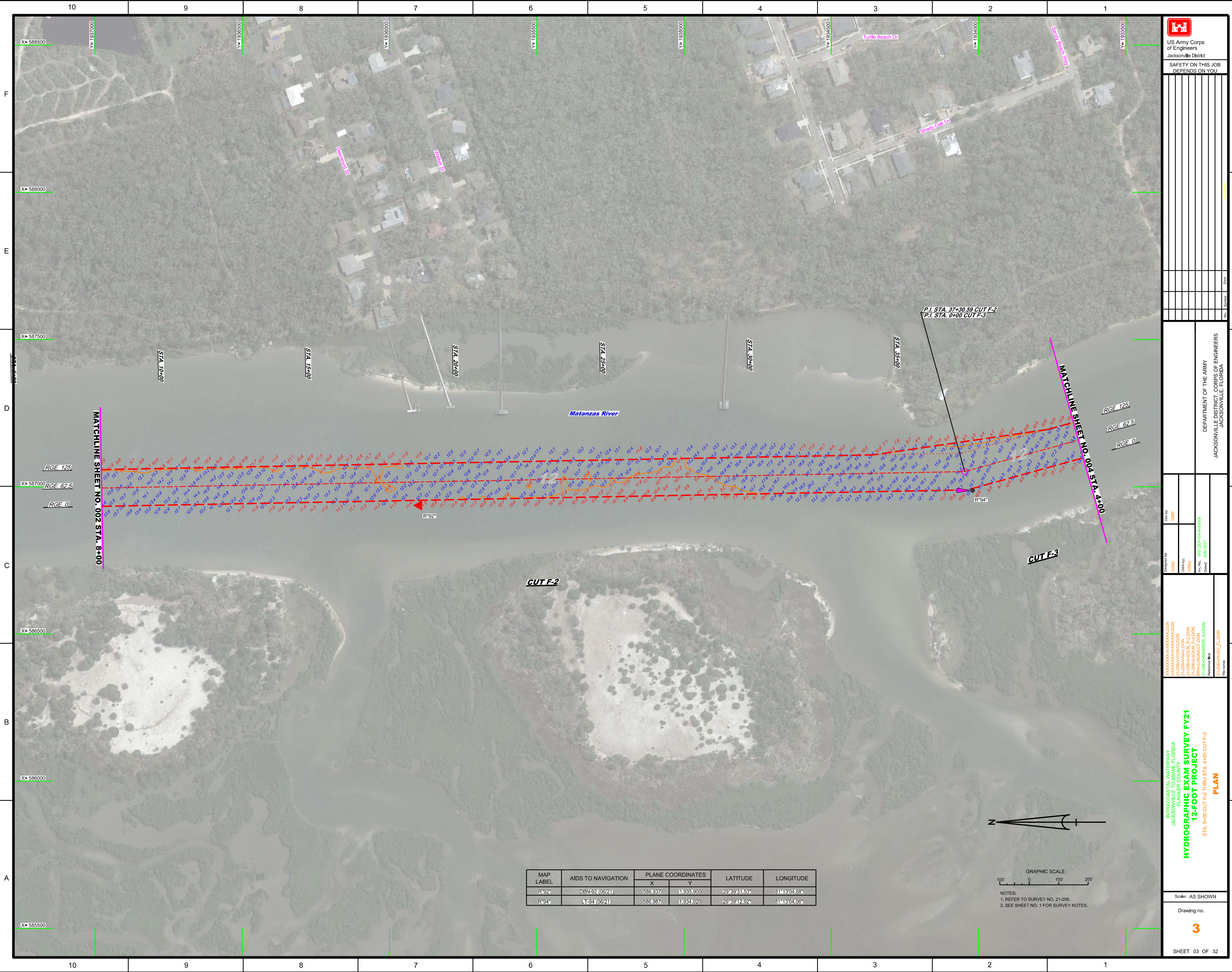
DEPARTMENT OF THE ARMY
 JACKSONVILLE DISTRICT, CORPS OF ENGINEERS
 JACKSONVILLE, FLORIDA


Drawn by: GHR
 Designated by: WRM
 Design: JUN 2021

INTRACOASTAL WATERWAY
 JACKSONVILLE TO MIAMI, FLORIDA
 FLAGLER COUNTY
**HYDROGRAPHIC EXAM SURVEY FY21
 12-FOOT PROJECT**
 STA. 27+00 CUT S-J64 THRU STA. 8+00 CUT F-2
PLAN

Scale: AS SHOWN
 Drawing no.
2

SHEET 02 OF 32





 US Army Corps of Engineers
 Jacksonville District
 SAFETY ON THIS JOB
 DEPENDS ON YOU

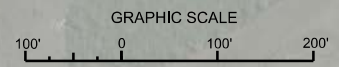
DEPARTMENT OF THE ARMY
 JACKSONVILLE DISTRICT, CORPS OF ENGINEERS
 JACKSONVILLE, FLORIDA

Checked By: GHR
 Designed By: WRM
 Drawn By: WRM
 File No: W912PFA-000-0000
 Date: JUN 2021

INTRACOASTAL WATERWAY
 JACKSONVILLE TO MIAMI, FLORIDA
 FLAGLER COUNTY
HYDROGRAPHIC EXAM SURVEY FY21
12-FOOT PROJECT
 STA. 8+00 CUT F-2 THRU STA. 4+00 CUT F-3
PLAN

Scale: AS SHOWN
 Drawing no. **3**
 SHEET 03 OF 32

MAP LABEL	AIDS TO NAVIGATION	PLANE COORDINATES		LATITUDE	LONGITUDE
		X	Y		
R'92	DBN-92 (06/21)	586.937	1935.900	29°39'31.53"	81°13'04.68"
R'94	LT-94 (06/21)	586.987	1934.020	29°39'12.92"	81°13'04.06"



NOTES:
 1. REFER TO SURVEY NO. 21-206.
 2. SEE SHEET NO. 1 FOR SURVEY NOTES.

MAP LABEL	AIDS TO NAVIGATION	PLANE COORDINATES		LATITUDE	LONGITUDE
		X	Y		
R-96*	DBN-96 (08/21)	587,506	11932,185	29°38'54.76"	81°12'58.15"
G-97*	DBN-97 (08/21)	587,795	11931,765	29°38'50.62"	81°12'54.86"

GRAPHIC SCALE
 0 100' 200'
 NOTES:
 1. REFER TO SURVEY NO. 21-206.
 2. SEE SHEET NO. 1 FOR SURVEY NOTES.

INTRACOASTAL WATERWAY
 JACKSONVILLE TO MIAMI, FLORIDA
 FLAGLER COUNTY
HYDROGRAPHIC EXAM SURVEY FY21
12-FOOT PROJECT
 STA. 4+00 CUT F-3 THRU STA. 15+00 CUT F-4
PLAN

Scale: AS SHOWN
 Drawing no.
4
 SHEET 04 OF 32

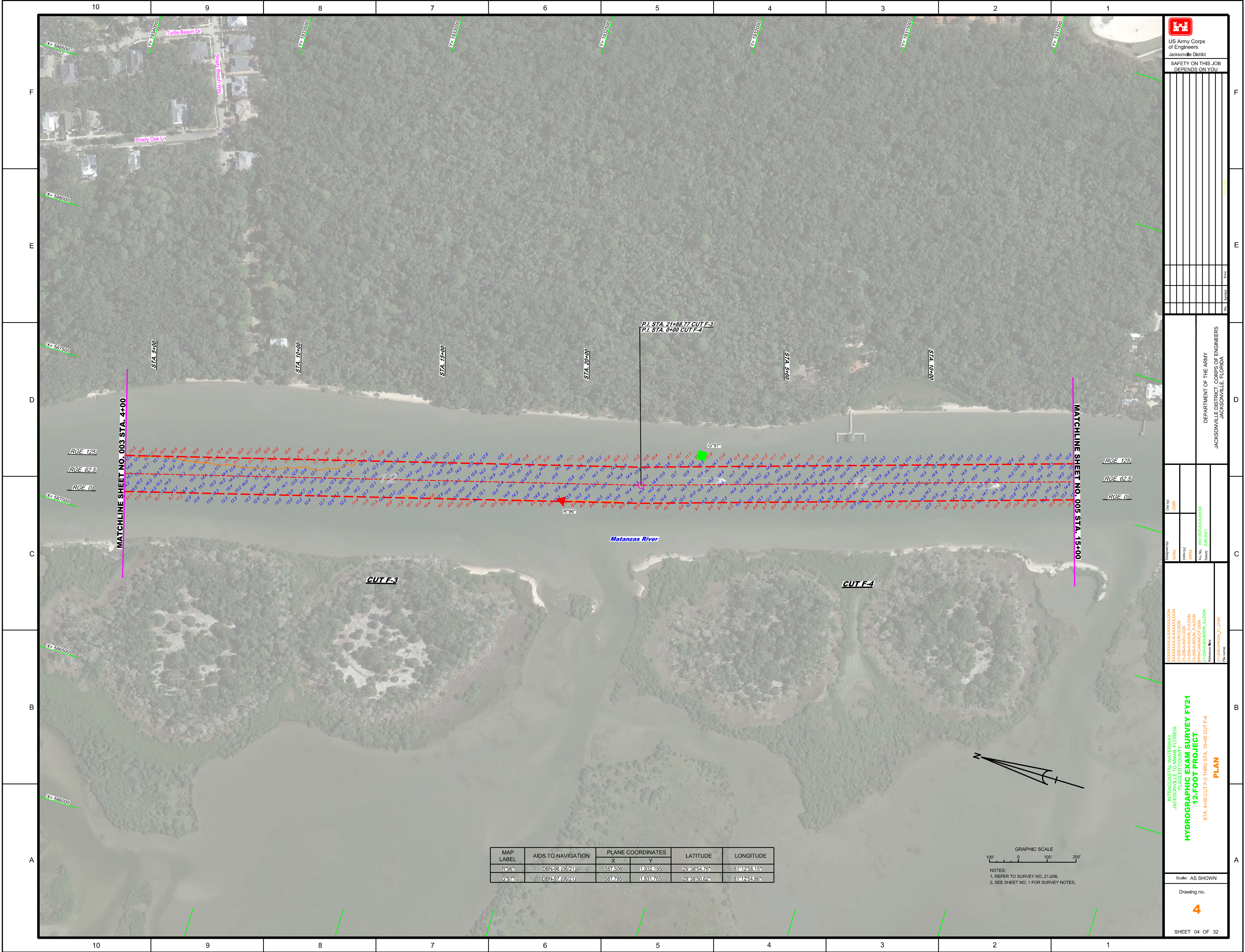
XXXXXXXXXXXXXXXXXXXX.DGN
 XXXXXXXXXXXXXXXXXXXX.DGN
 XXXXXXXXXXXXXXXXXXXX.DGN
 21-206-AM-V.DGN
 21-206-AM-F-3.DGN
 21-206-AM-F-4.DGN
 21-206-AM-CE-F.DGN
 21-206-AM-BR-BR-R.DGN
 21-206-AM-BR-R.DGN
 21-206-AM-HR-K-L.DGN
 File name:

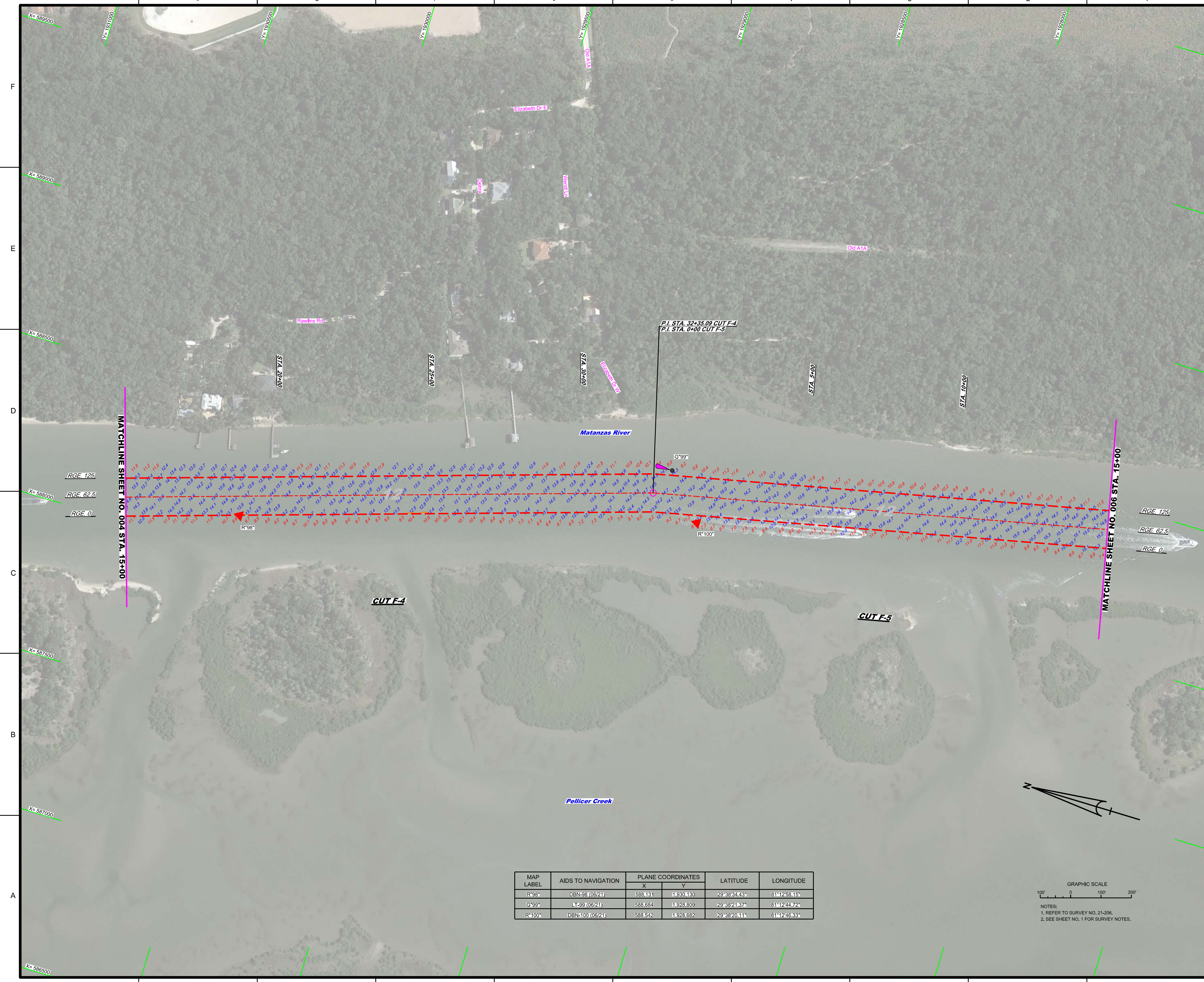
Designed by:
 WRM
 DWN
 WRM
 File No. 21-206-AM-F-4-004
 Date: JUN 2021


Checked by:
 GHR

DEPARTMENT OF THE ARMY
 JACKSONVILLE DISTRICT, CORPS OF ENGINEERS
 JACKSONVILLE, FLORIDA

US Army Corps of Engineers
 Jacksonville District
 SAFETY ON THIS JOB
 DEPENDS ON YOU







US Army Corps of Engineers
Jacksonville District

SAFETY ON THIS JOB
DEPENDS ON YOU

Rev	Description	Date	By	Check

DEPARTMENT OF THE ARMY
JACKSONVILLE DISTRICT, CORPS OF ENGINEERS
JACKSONVILLE, FLORIDA

Checked by: GHR
Designed by: WRM
Drawn by: WRM
File No: W91325-NA-A00X
Date: JUN 2021

XXXXXXXXXXXXXXXXXXXX
XXXXXXXXXXXXXXXXXXXX
XXXXXXXXXXXXXXXXXXXX
XXXXXXXXXXXXXXXXXXXX
21208A-HYDRA_F4-DGN
21208A-HYDRA_F5-DGN
21208A-HYDRA_F_L-DGN
Reference files:
21208A-HYDRA_F_L-DGN

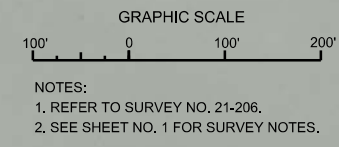
INTRACOASTAL WATERWAY
JACKSONVILLE TO MIAMI, FLORIDA
FLAGLER COUNTY
HYDROGRAPHIC EXAM SURVEY FY21
12-FOOT PROJECT
STA. 15+00 CUT F-4 THRU STA. 15+00 CUT F-5
PLAN

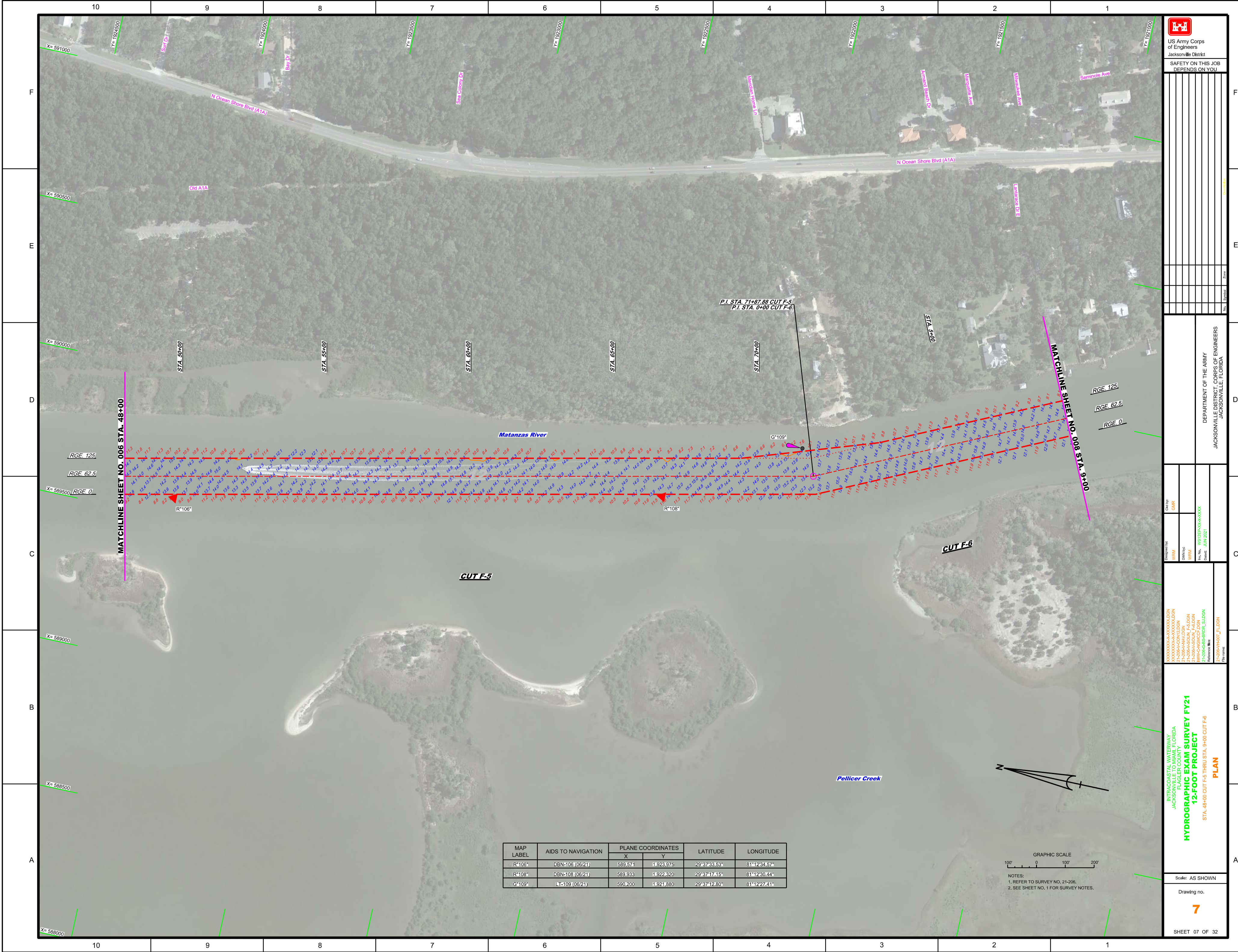
Scale: AS SHOWN


Drawing no.
5

SHEET 05 OF 32

MAP LABEL	AIDS TO NAVIGATION	PLANE COORDINATES		LATITUDE	LONGITUDE
		X	Y		
R*96*	DBN-98 (06/21)	588,131	1,930,130	29°38'34.43"	81°12'58.15"
G*99*	LT-99 (06/21)	588,684	1,928,809	29°38'21.37"	81°12'44.72"
R*100*	DBN-100 (06/21)	588,542	1,928,682	29°38'20.11"	81°12'46.33"





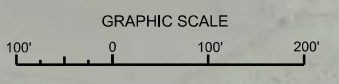

 US Army Corps of Engineers
 Jacksonville District
 SAFETY ON THIS JOB DEPENDS ON YOU

DEPARTMENT OF THE ARMY JACKSONVILLE DISTRICT, CORPS OF ENGINEERS JACKSONVILLE, FLORIDA	Drawn by: WRM Designated by: WRM Date: JUN 2021	Checked by: GHR Date: JUN 2021
--	--	---

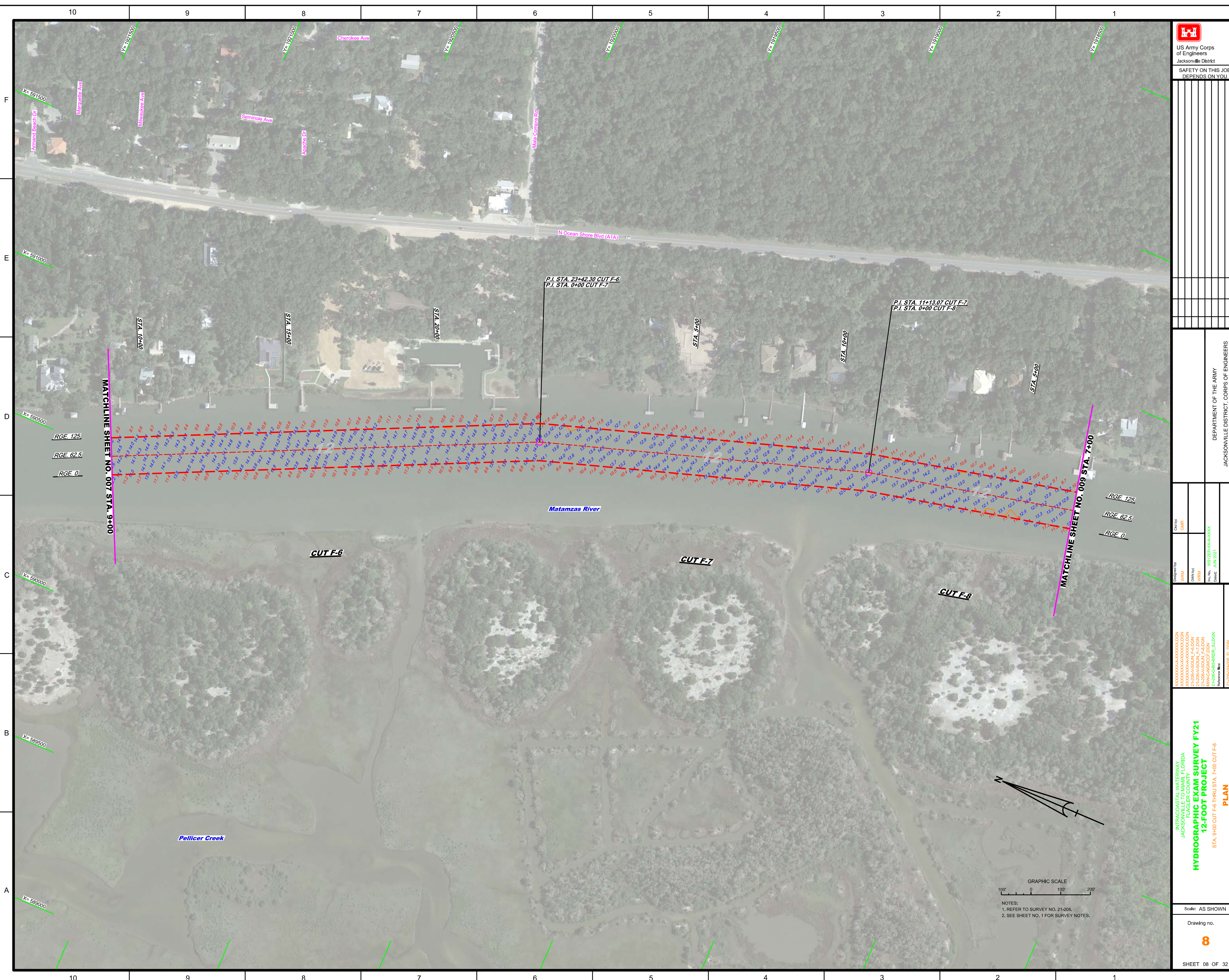
INTRACOASTAL WATERWAY
 JACKSONVILLE TO MIAMI, FLORIDA
 FLAGLER COUNTY
HYDROGRAPHIC EXAM SURVEY FY21
12-FOOT PROJECT
 STA. 48+00 CUT F-5 THRU STA. 9+00 CUT F-6
PLAN

Scale: AS SHOWN
 Drawing no. **7**
 SHEET 07 OF 32

MAP LABEL	AIDS TO NAVIGATION	PLANE COORDINATES		LATITUDE	LONGITUDE
		X	Y		
R*106°	DBN-106 (06/21)	589.571	1.923.975	29°37'33.53"	81°12'34.57"
R*108°	DBN-108 (06/21)	589.933	1.922.320	29°37'17.15"	81°12'30.44"
G*109°	LT-109 (06/21)	590.200	1.921.880	29°37'12.80"	81°12'27.41"



NOTES:
 1. REFER TO SURVEY NO. 21-206.
 2. SEE SHEET NO. 1 FOR SURVEY NOTES.

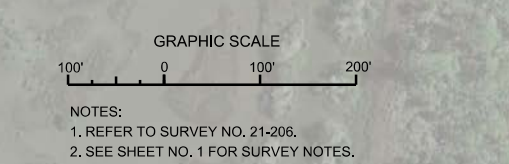


US Army Corps of Engineers
Jacksonville District
SAFETY ON THIS JOB
DEPENDS ON YOU

DEPARTMENT OF THE ARMY
JACKSONVILLE DISTRICT, CORPS OF ENGINEERS
JACKSONVILLE, FLORIDA

Drawn by: **GRH**
Checked by: **GRH**
Designed by: **WRM**
Project No: **WRM**
File No: **WRM**
Date: **JUN 2021**

INTRACOASTAL WATERWAY
JACKSONVILLE TO MIAMI, FLORIDA
FLAGLER COUNTY
**HYDROGRAPHIC EXAM SURVEY FY21
12-FOOT PROJECT**
PLAN
STA. 9+00 CUT F-6 THRU STA. 7+00 CUT F-8
21-2065-HYDROE_L_DGN
Reference File: 21-2065-GB-RR06_SLDGN

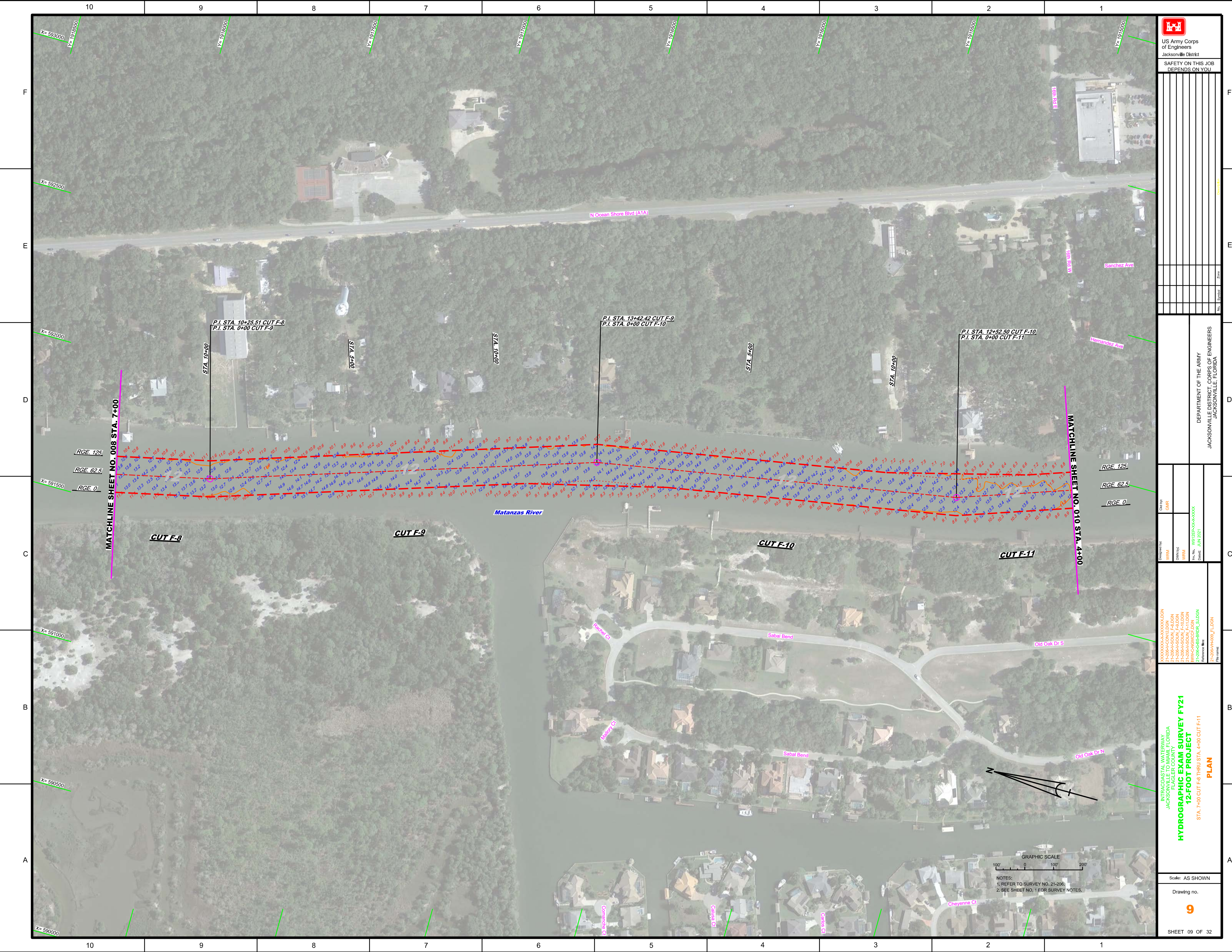


Scale: AS SHOWN
Drawing no. **8**
SHEET 08 OF 32

Checked By	GHR
Designed By	WRM
DRAWN BY	WRM
FILE NO.	W312210-0000-0004
DATE	JUN 2021

INTRACOASTAL WATERWAY
JACKSONVILLE TO MIAMI, FLORIDA
FLAGLER COUNTY
HYDROGRAPHIC EXAM SURVEY FY21
12-FOOT PROJECT
STA. 7+00 CUT F-8 THRU STA. 4+00 CUT F-11
PLAN

Scale:	AS SHOWN
Drawing no.	9
SHEET	09 OF 32



10 9 8 7 6 5 4 3 2 1

F
E
D
C
B
A

X= 583000
Y= 191500

X= 582500
Y= 191500

X= 582000
Y= 191500

X= 581500
Y= 191500

X= 581000
Y= 191500

X= 580500
Y= 191500

X= 580000
Y= 191500

RGE. 125
RGE. 62.5
RGE. 0

MATCHLINE SHEET NO. 008 STA. 7+00

MATCHLINE SHEET NO. 010 STA. 4+00

STA. 7+00
STA. 5+00
STA. 10+00
STA. 10+00
STA. 5+00
STA. 10+00

P.I. STA. 10+25.51 CUT F-8
P.I. STA. 0+00 CUT F-9

P.I. STA. 13+42.42 CUT F-9
P.I. STA. 0+00 CUT F-10

P.I. STA. 12+52.50 CUT F-10
P.I. STA. 0+00 CUT F-11

Matanzas River

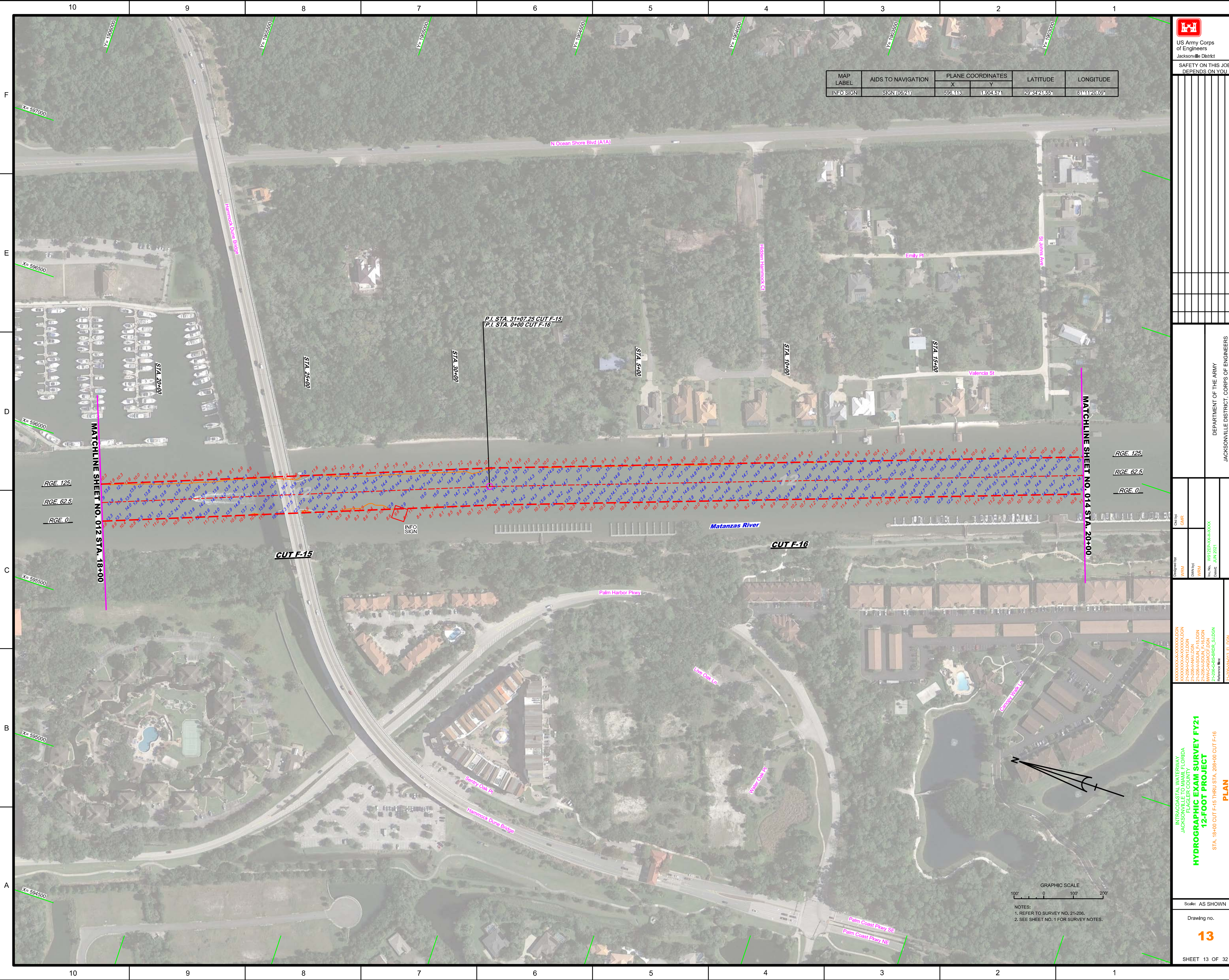
CUT F-8
CUT F-9
CUT F-10
CUT F-11

Reichel Ct
Melia Ct
Sabal Bend
Sabal Bend
Cheyenne Ct

Old Oak Dr S
Old Oak Dr N

GRAPHIC SCALE
0 100 200

NOTES:
1. REFER TO SURVEY NO. 21-206.
2. SEE SHEET NO. 1 FOR SURVEY NOTES.



MAP LABEL	AIDS TO NAVIGATION	PLANE COORDINATES		LATITUDE	LONGITUDE
		X	Y		
INFO SIGN	SIGN (08/21)	596113	1,904,571	29°34'21.56"	81°11'20.09"

US Army Corps of Engineers

 Jacksonville District

 SAFETY ON THIS JOB DEPENDS ON YOU

DEPARTMENT OF THE ARMY

 JACKSONVILLE DISTRICT, CORPS OF ENGINEERS

 JACKSONVILLE, FLORIDA

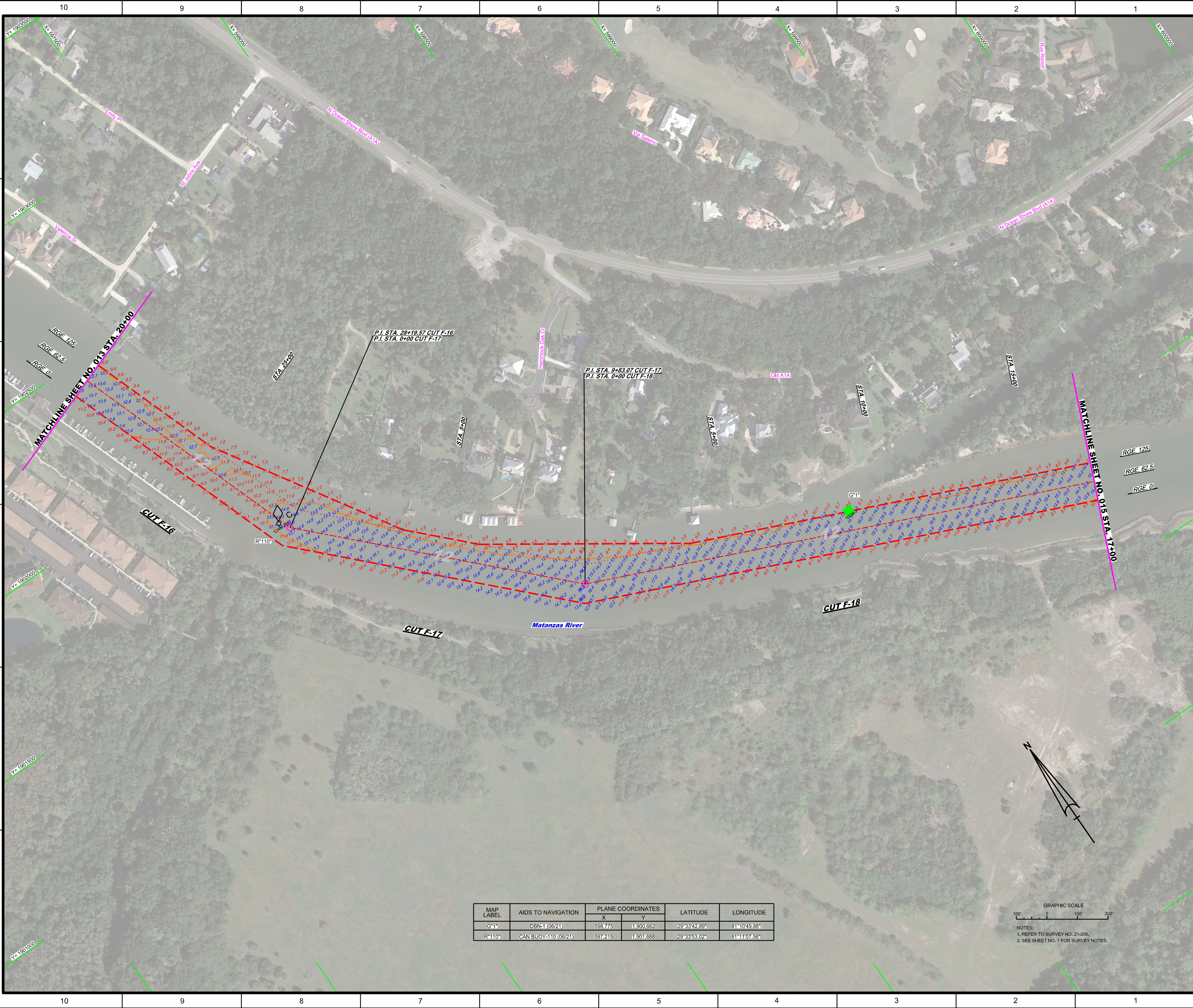
Drawn by: WRM Designated by: WRM Check by: GHR File No: W92325-00-000-000 Date: JUN 2021	STA 18+00 CUT F-15 THRU STA 209+00 CUT F-16 PLAN
XXXXXXXXXXXXXXXXXXXX XXXXXXXXXXXXXXXXXXXX XXXXXXXXXXXXXXXXXXXX XXXXXXXXXXXXXXXXXXXX XXXXXXXXXXXXXXXXXXXX XXXXXXXXXXXXXXXXXXXX XXXXXXXXXXXXXXXXXXXX XXXXXXXXXXXXXXXXXXXX XXXXXXXXXXXXXXXXXXXX	INTRACOASTAL WATERWAY JACKSONVILLE TO MIAMI, FLORIDA FLAGLER COUNTY HYDROGRAPHIC EXAM SURVEY FY21 12-FOOT PROJECT STA 18+00 CUT F-15 THRU STA 209+00 CUT F-16 PLAN
Scale: AS SHOWN	Drawing no. 13
SHEET 13 OF 32	



NOTES:

 1. REFER TO SURVEY NO. 21-206.

 2. SEE SHEET NO. 1 FOR SURVEY NOTES.



US Army Corps
of Engineers
Jacksonville District

**SAFETY ON THIS JOB
DEPENDS ON YOU**

DEPARTMENT OF THE ARMY
JACKSONVILLE DISTRICT, CORPS OF ENGINEERS
JACKSONVILLE, FLORIDA

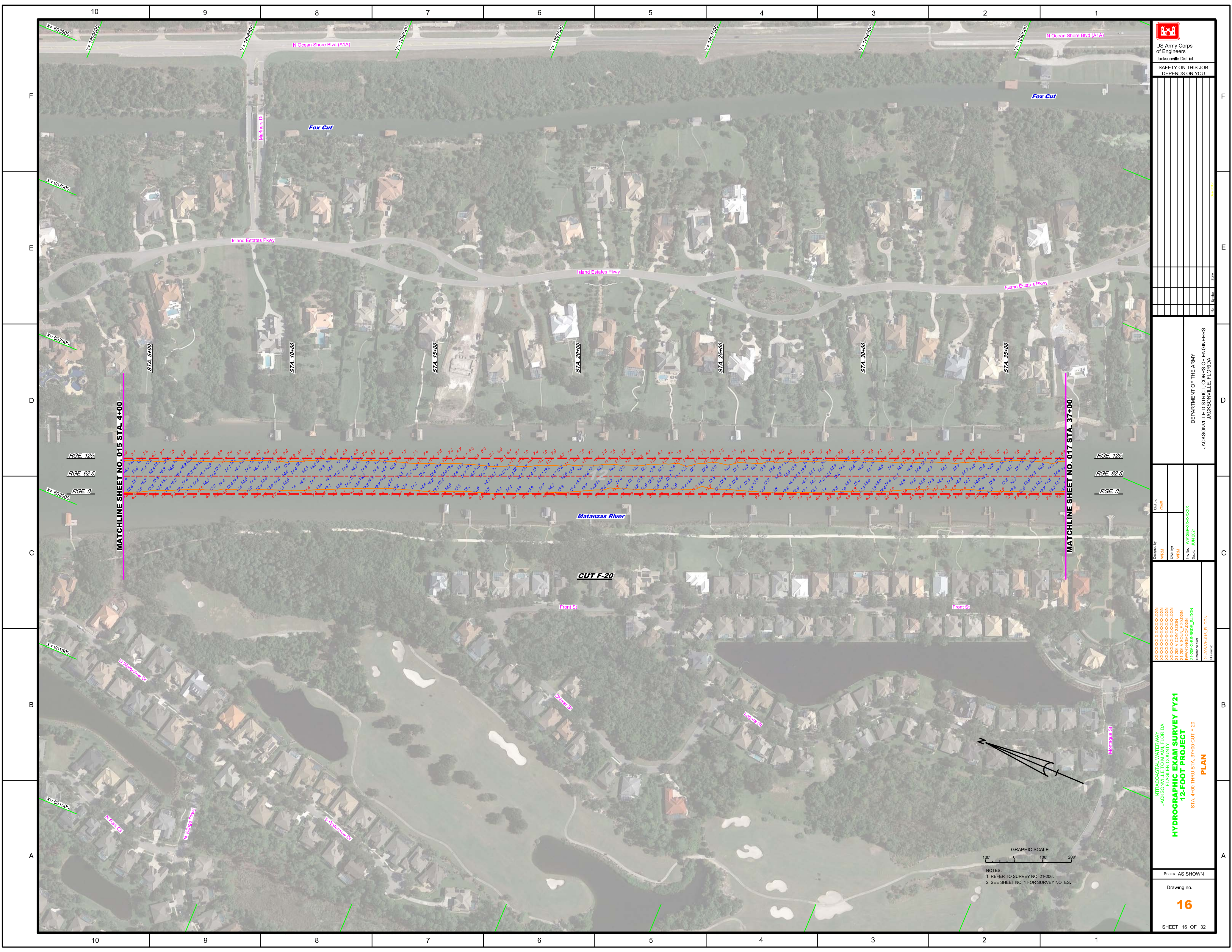
Drawn by: WRM
Checked by: GHR
Design Date: JUN 2021
Project No: WJ325A-06-VX-004

INTRACOASTAL WATERWAY
JACKSONVILLE TO MIAMI, FLORIDA
FLAGLER COUNTY
**HYDROGRAPHIC EXAM SURVEY FY21
12-FOOT PROJECT**
PLAN
STA, 20+00 CUT F-16 THRU STA, 17+00 CUT F-18

MAP LABEL	AIDS TO NAVIGATION	PLANE COORDINATES		LATITUDE	LONGITUDE
		X	Y		
G*1*	DBN-1 (06/21)	598,775	1,900,662	29°33'42.89"	81°10'48.88"
R*110*	CAN BUOY-110 (06/21)	597,215	1,901,688	29°33'53.02"	81°11'07.56"

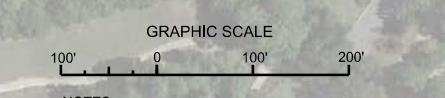
GRAPHIC SCALE
100' 0 100' 200'

NOTES:
1. REFER TO SURVEY NO. 21-206.
2. SEE SHEET NO. 1 FOR SURVEY NOTES.



MATCHLINE SHEET NO. 015 STA. 4+00

MATCHLINE SHEET NO. 017 STA. 37+00



NOTES:
 1. REFER TO SURVEY NO. 21-206.
 2. SEE SHEET NO. 1 FOR SURVEY NOTES.

DEPARTMENT OF THE ARMY
 JACKSONVILLE DISTRICT, CORPS OF ENGINEERS
 JACKSONVILLE, FLORIDA

Check By: GHR	Designed By: WRM
Drawn By: WRM	Date: JUN 2021
Reviewed By: WRM	Scale: AS SHOWN
Drawn By: WRM	Scale: AS SHOWN

INTRACOASTAL WATERWAY
 JACKSONVILLE TO MIAMI, FLORIDA
 FLAGLER COUNTY
12-FOOT PROJECT
 STA. 4+00 THRU STA. 37+00 CUT F-20
PLAN

Scale: AS SHOWN

Drawing no. **16**